

User Manual for NetAudio 1.1.3

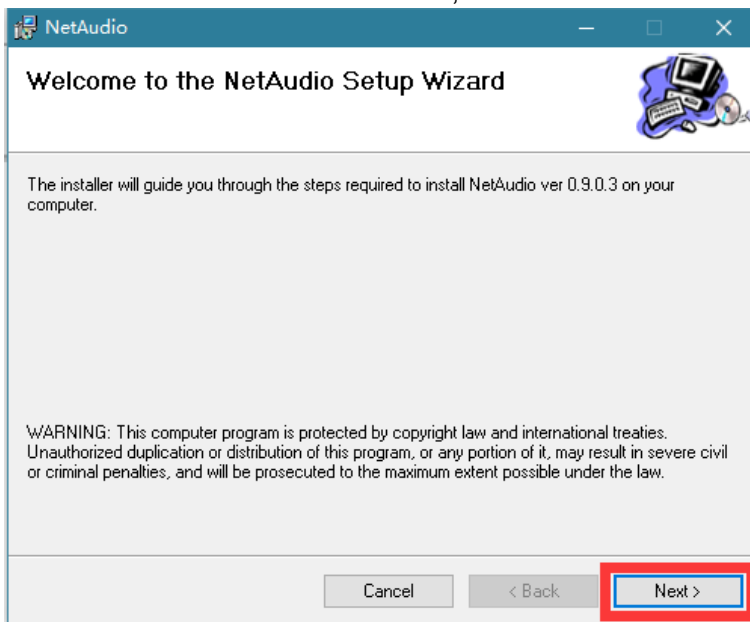
Step 1. Software Installation

If you had installed NetAudio before, please Unload it first, then install the new software following the instruction.

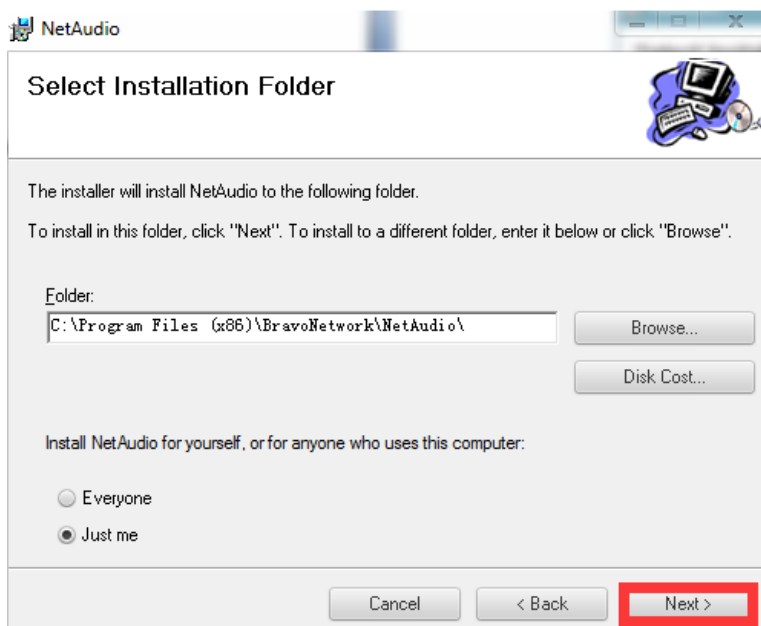
1. Download the NetAudio software package and extract it, then click "setup.exe"



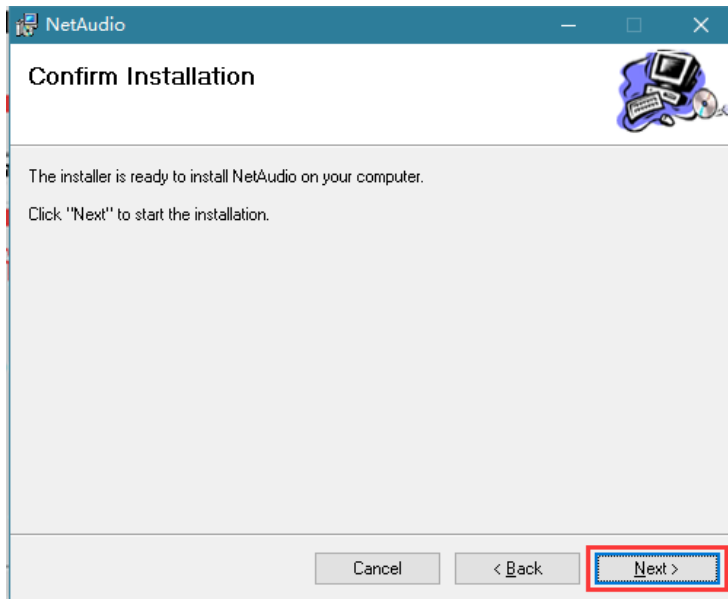
to start installation, click "Next" in the prompt box.



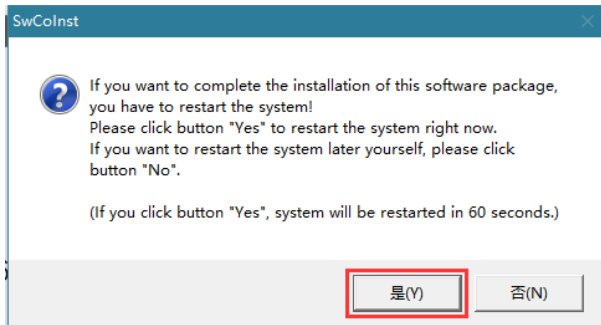
2. Use the default settings for the installation folder, click "Next".



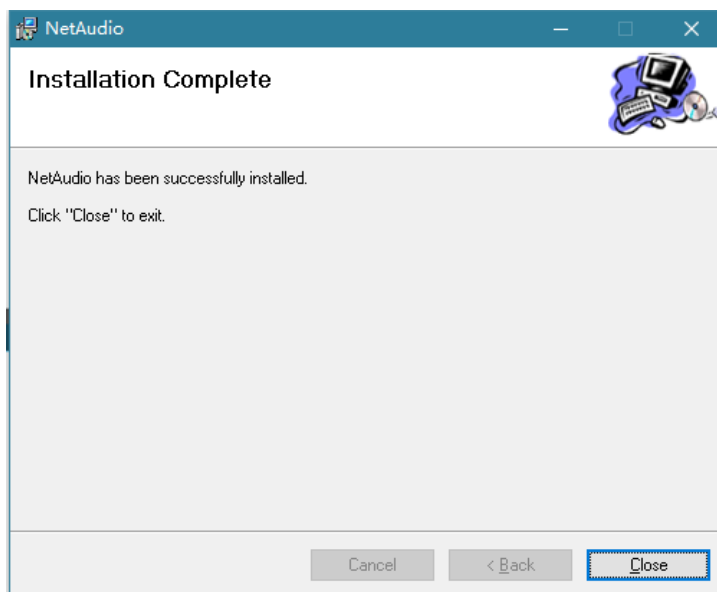
3. Click "Next" in the "Confirm Installation" box.



4. Click “是(Y)” when a warning dialog box appears.



5. Click “Close” to finish the installation (make sure to save all your documents before click “Close”), and wait for 60 seconds, your computer will automatically restart.



Note: NetAudio will not work until the computer system restarted after finish the installation.

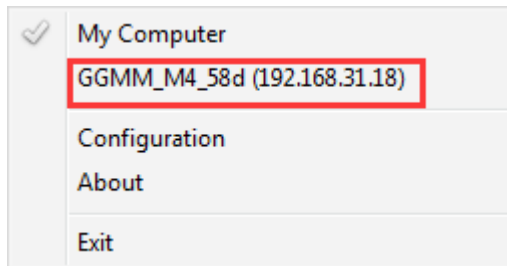
Step 2. Playback Operation

- **Single speaker playback operation**

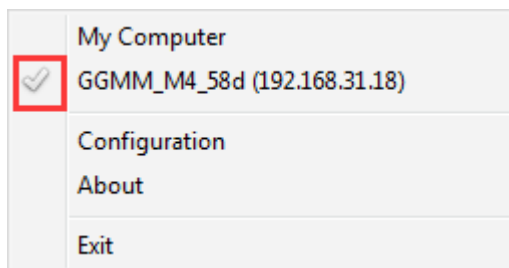
1. Double Click the NetAudio icon on computer desktop to start the software, you will see the driver icon appears in the lower right corner of the computer taskbar.



2. Click the driver icon, you will see the speaker name appears when your computer and the speaker are connected to the same Wi-Fi.



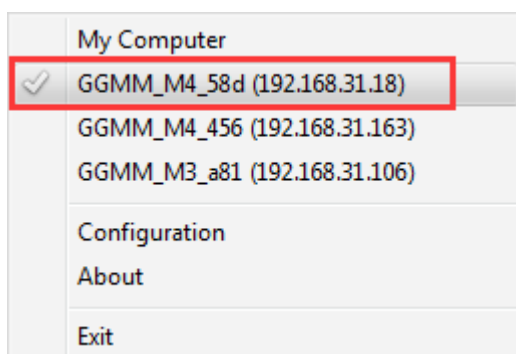
3. Click the speaker name to choose it, then you can stream music from computer to the speaker.



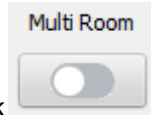
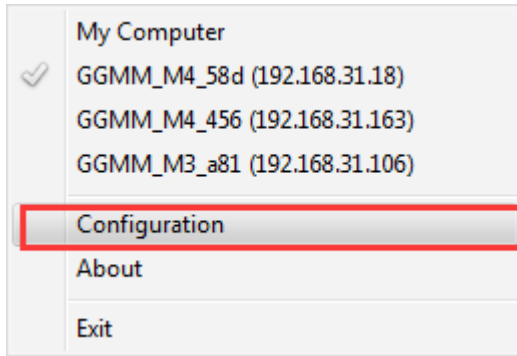
- **Multi speakers playback operation**

When there' re multi speakers connected to the same Wi-Fi with computer, you can set up Multi room mode.

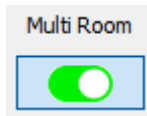
1. Click the driver icon, click to choose one speaker as the main speaker.



2. Click "Configuration", comes to the configuration page.

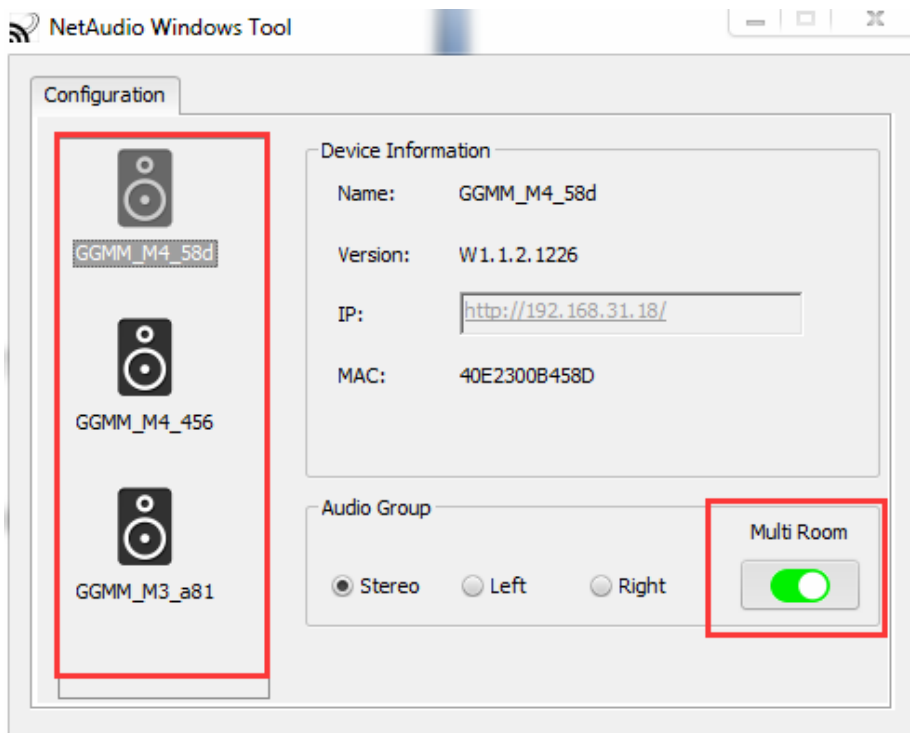


4. Click the speaker name on the left side of the configuration page, click icon of each speaker to open their multi-room switch. When it turns to be green

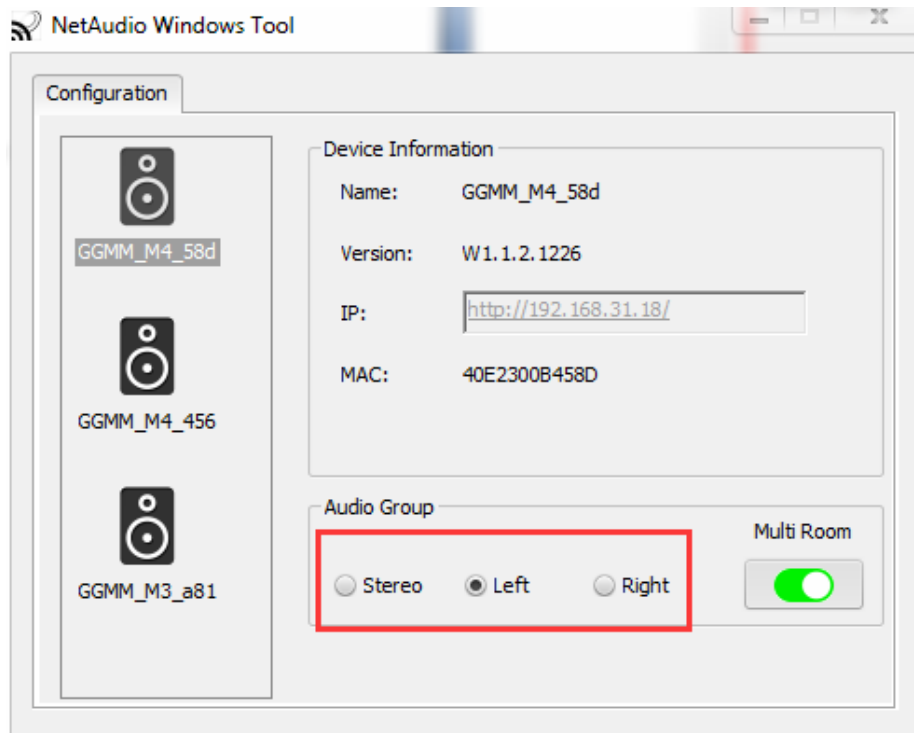


means the speaker is in multi room mode. Then you can stream music from computer to multi speakers simultaneously.

- 3.



You can also set different channels to play, such as: set one speaker to be left channel, and set another to be right channel.



Notes:

- When close the multi room switch of the main speaker, other speakers will automatically exit multi room mode
- The multi room mode will occupy large bandwidth, it' ll result in stuck playing if you connect too many devices or when the WI-Fi is unstable.